

**Innovia Medical**<sup>®</sup>

# Ear Ventilation Tubes



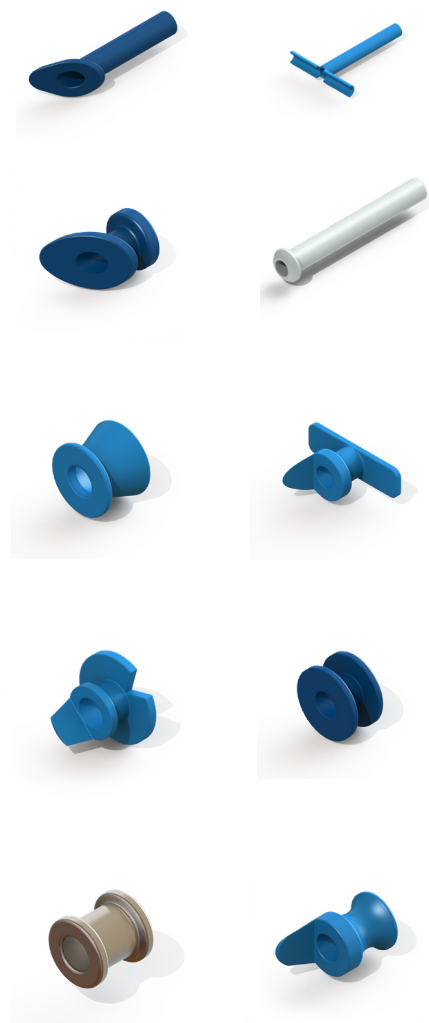
**SAMPLES  
AVAILABLE**

and NEW 2024  
price list

# EAR VENTILATION TUBES

## KEY PRODUCT FEATURES

- ✓ Effective in the management of Eustachian tube dysfunction, chronic otitis media with effusion and recurrent acute otitis media
- ✓ Single-use
- ✓ Sterile, Box of 10
- ✓ Manufactured in the USA



### Material Breakdown

Material	Description
<b>Fluoroplastic</b> Blue or White	Inert, biocompatible and very smooth. The rigid material facilitates tube insertion and its nonstick characteristics may reduce adhesion formation and/or clogging. Summit Medical uses only 100% certified virgin material.
<b>Silicone Elastomer</b> Blue	Extremely soft, compliant and elastic material. It is easily manipulated, extremely lubricious, and allows ear ventilation tubes to be easily compressed for insertion or removal. Summit Medical uses 100% certified medical grade silicone resin.
<b>Titanium E</b>	One-half the weight of stainless steel with many of the same features and benefits. It has excellent biocompatibility, is extremely resistant to corrosion and attack by body fluids, its rigidity facilitates insertion and it is extremely durable. Summit Medical uses 100% certified ASTM F136-92 titanium.

#### MRI Information

The titanium vent tube and stainless steel wire have been determined to be MR-conditional according to the terminology specified in the American Society for Testing and Materials (ASTM) International, Designation: F2503-05.

A patient with this device can be scanned safely immediately after placement under the following conditions:

- Static magnetic field of 3 Tesla or less
- Maximum spatial gradient magnetic field of 720-Gauss/cm or less

Additional information can be obtained by contacting Summit Medical at 651-789-3939 or 1-888-229-2875.

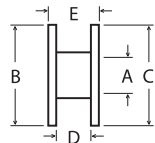
# CONTENTS

WE MANUFACTURE 20 TYPES TO CHOOSE FROM!

Armstrong Beveled Straight Shank	→	<b>Page 4</b>
Armstrong Grommet	→	<b>Page 4</b>
Modified Armstrong Grommet	→	<b>Page 4</b>
Baxter Bevel Button	→	<b>Page 5</b>
Bevel Bobbin	→	<b>Page 5</b>
Collar Button (Sheehy Style)	→	<b>Page 5</b>
Donaldson	→	<b>Page 6</b>
Mini-Grommet	→	<b>Page 6</b>
Mini-Tef	→	<b>Page 6</b>
Paparella	→	<b>Page 6</b>
Reuter Bobbin without Holes	→	<b>Page 7</b>
Shah	→	<b>Page 7</b>
Shepard	→	<b>Page 7</b>
Straight Shank	→	<b>Page 8</b>
T-Tube	→	<b>Page 8</b>
T-Tube Supersoft	→	<b>Page 8</b>
Grommet T-Tube	→	<b>Page 9</b>
Touma T-Tube	→	<b>Page 9</b>
Touma II T-Tube	→	<b>Page 9</b>
Umbrella	→	<b>Page 9</b>

## KEY

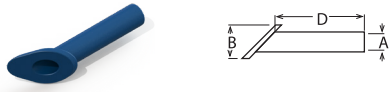
Measurements are listed in millimeters. All ventilation tube dimensions are approximate and subject to manufacturing variances.

 <p>Example</p>	A	B	C	D	E
	Inner Diameter	Inner Flange Diameter	Outer Flange Diameter	Inner Flange Distance	Total Length

**All listed Ear Ventilation Tubes Sold in Boxes of 10**

**Armstrong Beveled Straight Shank**

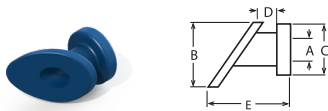
The angle of the beveled inner flange corresponds to the angle of the tympanic membrane for easier insertion, resistance to premature extrusion, and visibility through the lumen.



Code	Feature	Material	Inner Diameter (A)	Inner Flange Diameter (B)	Outer Flange Diameter (C)	Inner Flange Distance (D)	Total Length (E)
VT-0500-01	--	Silicone	1.14	2.6	-	7.0	-
VT-0501-01	--	Fluoroplastic Blue	1.14	2.6	-	7.5	-

**Armstrong Grommet**

Beveled inner flange corresponds to the angle of the tympanic membrane for easier insertion, extrusion resistance, and visibility through the lumen. Outer flange adds security.



Code	Feature	Material	Inner Diameter (A)	Inner Flange Diameter (B)	Outer Flange Diameter (C)	Inner Flange Distance (D)	Total Length (E)
VT-0503-01	--	Fluoroplastic Blue	1.14	2.5	2.4	1.0	4.0

**Modified Armstrong Grommet**

Modified angle facilitates insertion into the myringotomy.



Code	Feature	Material	Inner Diameter (A)	Inner Flange Diameter (B)	Outer Flange Diameter (C)	Inner Flange Distance (D)	Total Length (E)
VT-0508-01	--	Fluoroplastic Blue	1.14	3.07	2.59	1.29	3.07

**Baxter Bevel Button**

The beveled shape resists occlusion and clears easily. It permits improved visibility through the lumen. The smaller models are especially useful for small ear canal or pediatric applications.



Code	Feature	Material	Inner Diameter (A)	Inner Flange Diameter (B)	Outer Flange Diameter (C)	Inner Flange Distance (D)	Total Length (E)
VT-0602-01	--	Fluoroplastic White	1.27	3.0	3.0	-	2.2
VT-0606-01	--	Silicone	1.27	2.62	1.27	-	2.08

**Bevel Bobbin**

Combining the best features of the Baxter Bevel Button and the Reuter Bobbin, the beveled shape resists occlusion and clears easily.



Code	Feature	Material	Inner Diameter (A)	Inner Flange Diameter (B)	Outer Flange Diameter (C)	Inner Flange Distance (D)	Total Length (E)
VT-0608-01	--	Fluoroplastic White	1.14	2.79	2.79	0.66	1.75

**Collar Button (Sheehy Style)**

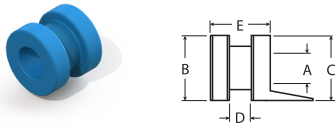
Available in fluoroplastic or silicone, with or without wire and two inner lumen diameters. These large inner diameter models offer increased drainage and ventilation. Similar to Reuter Bobbin without holes.



Code	Feature	Material	Inner Diameter (A)	Inner Flange Diameter (B)	Outer Flange Diameter (C)	Inner Flange Distance (D)	Total Length (E)
VT-1001-01	--	Fluoroplastic White	1.27	2.9	2.9	1.4	2.1
VT-1002-01	--	Silicone	1.27	2.84	2.84	1.43	2.0

**Donaldson**

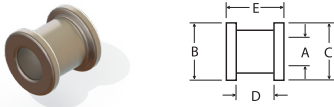
The large lumen offers good ventilation and the dual flange design resists migration and extrusion. Available with a tab for insertion and removal convenience.



Code	Feature	Material	Inner Diameter (A)	Inner Flange Diameter (B)	Outer Flange Diameter (C)	Inner Flange Distance (D)	Total Length (E)
VT-0100-01	--	Silicone	1.14	2.4	2.4	0.8	2.2
VT-0101-01	w/tab	Fluoroplastic White	1.27	2.9	2.9	1.4	2.1
VT-0102-01	--	Fluoroplastic White	1.14	2.84	2.84	1.43	2.0

**Mini-Grommet**

Dimensioned for pediatric, small ear canal, and tortuous ear canal applications. Mini-Grommet tubes are precision-machined from lightweight, certified titanium.



Code	Feature	Material	Inner Diameter (A)	Inner Flange Diameter (B)	Outer Flange Diameter (C)	Inner Flange Distance (D)	Total Length (E)
VT-1425-01	--	Titanium	0.76	1.5	1.5	1.0	1.5

**Mini-Tef**

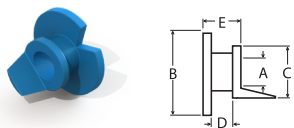
Dimensioned for pediatric, small ear canal, and tortuous ear canal applications. Mini-Tef tubes are constructed of white fluoroplastic and feature a larger diameter inner flange.



Code	Feature	Material	Inner Diameter (A)	Inner Flange Diameter (B)	Outer Flange Diameter (C)	Inner Flange Distance (D)	Total Length (E)
VT-1602-01	--	Fluoroplastic White	0.89	2.0	1.6	1.0	1.5

**Paparella**

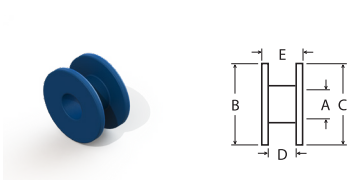
Available in two inner lumen and flange sizes (Types I and II), the notched inner flange is designed for a "twist-in" insertion in a smaller incision.



Code	Feature	Material	Inner Diameter (A)	Inner Flange Diameter (B)	Outer Flange Diameter (C)	Inner Flange Distance (D)	Total Length (E)
VT-0300-01	Type I	Silicone	1.14	2.4	2.1	1.1	2.2
VT-0301-01	Type II	Silicone	1.42	4.4	2.7	1.1	2.2

**Reuter Bobbin without Holes**

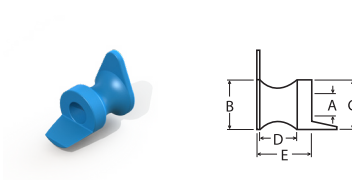
The larger flange diameters encourage longer-term retention. The short flange model is designed to pass through smaller speculums. Available in three lumen diameters. Design is similar to Collar Button design.



Code	Feature	Material	Inner Diameter (A)	Inner Flange Diameter (B)	Outer Flange Diameter (C)	Inner Flange Distance (D)	Total Length (E)
VT-1203-01	--	Fluoroplastic White	1.00	2.8	2.8	1.0	1.5
VT-1204-01	--	Fluoroplastic White	1.12	2.8	2.8	1.0	1.5
VT-1231-01	--	Titanium	1.14	2.8	2.8	1.0	1.4
VT-1232-01	--	Titanium	1.27	2.8	2.8	1.0	1.4

**Shah**

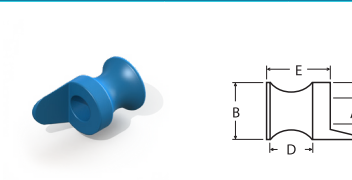
The tab on the outer flange facilitates insertion and better resists extrusion.



Code	Feature	Material	Inner Diameter (A)	Inner Flange Diameter (B)	Outer Flange Diameter (C)	Inner Flange Distance (D)	Total Length (E)
VT-0802-01	w/tab	Fluoroplastic White	1.14	2.4	2.4	-	2.5
VT-0803-01	w/wire	Fluoroplastic White	1.14	2.4	2.4	-	2.5

**Shepard**

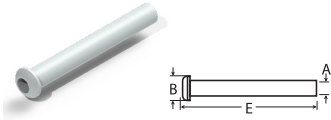
Ease of insertion with forceps or a tube inserter have led to this design's popularity. Available in silicone with a tab or in fluoroplastic with and without wire.



Code	Feature	Material	Inner Diameter (A)	Inner Flange Diameter (B)	Outer Flange Diameter (C)	Inner Flange Distance (D)	Total Length (E)
VT-0200-01	w/tab	Silicone	1.12	2.4	2.4	1.6	2.4
VT-0201-01	w/wire	Fluoroplastic White	1.14	2.4	2.4	1.6	2.4
VT-0202-01	--	Fluoroplastic White	1.14	2.4	2.4	1.6	2.4
VT-0203-01	w/wire	Fluoroplastic White	1.00	2.4	2.4	1.6	2.4
VT-0204-01	--	Fluoroplastic White	1.00	2.4	2.4	1.6	2.4

**Straight Shank**

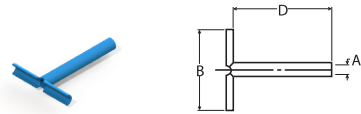
Smaller inner flange facilitates insertion in a smaller incision. May be cut to length. Longer shaft lengths may help resist water migration into the middle ear.



Code	Feature	Material	Inner Diameter (A)	Inner Flange Diameter (B)	Outer Flange Diameter (C)	Inner Flange Distance (D)	Total Length (E)
VT-0901-01	--	Fluoroplastic White	1.14	2.2	-	-	7.0
VT-0903-01	--	Fluoroplastic White	0.89	2.2	-	-	7.0

**T-Tube**

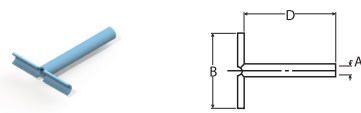
Most often used for longer-term ventilation, the flexible flanges permit insertion through a smaller incision, stable positioning in the tympanic membrane, and easy removal.



Code	Feature	Material	Inner Diameter (A)	Inner Flange Diameter (B)	Outer Flange Diameter (C)	Inner Flange Distance (D)	Total Length (E)
VT-0400-01	--	Silicone	1.14	9.8	-	12.0	-
VT-0401-01	--	Silicone	1.14	7.9	-	4.8	-
VT-0406-01	--	Silicone	1.14	4.1	-	4.8	-
VT-0407-01	--	Silicone	1.14	5.6	-	8.0	-

**T-Tube Supersoft**

Most often used for longer-term ventilation, the flexible flanges permit insertion through a smaller incision, stable positioning in the tympanic membrane, and easy removal.

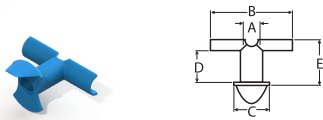


Code	Feature	Material	Inner Diameter (A)	Inner Flange Diameter (B)	Outer Flange Diameter (C)	Inner Flange Distance (D)	Total Length (E)
VT-0409-01	--	Silicone	1.14	9.8	-	12.0	-
VT-0410-01	--	Silicone	1.14	5.6	-	8.0	-



**Grommet T-Tube**

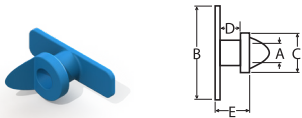
Retaining the advantages of the conventional T-tubes, this larger-lumen design adds a butterfly-shaped grommet with integral tab for ease of insertion and removal.



Code	Feature	Material	Inner Diameter (A)	Inner Flange Diameter (B)	Outer Flange Diameter (C)	Inner Flange Distance (D)	Total Length (E)
VT-0403-01	--	Silicone	1.27	6.4	3.8	2.4	3.5

**Touma T-Tube**

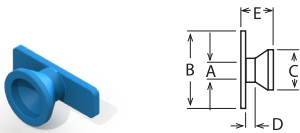
This compact length, longer-term design features flat T-type inner flanges and an outer grommet with integral tab for ease of insertion and removal.



Code	Feature	Material	Inner Diameter (A)	Inner Flange Diameter (B)	Outer Flange Diameter (C)	Inner Flange Distance (D)	Total Length (E)
VT-0405-01	--	Silicone	1.14	5.8	2.4	1.3	2.1

**Touma II T-Tube**

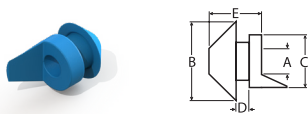
This compact length, longer-term design features flat T-type inner flanges and an outer grommet with integral tab for ease of insertion and removal.



Code	Feature	Material	Inner Diameter (A)	Inner Flange Diameter (B)	Outer Flange Diameter (C)	Inner Flange Distance (D)	Total Length (E)
VT-0408-01	--	Silicone	1.12	5.0	2.59	0.63	2.08

**Umbrella**

Available in one lumen and flange size (Types I), the inner flange collapses during insertion through a smaller incision and inverts for convenient removal.



Code	Feature	Material	Inner Diameter (A)	Inner Flange Diameter (B)	Outer Flange Diameter (C)	Inner Flange Distance (D)	Total Length (E)
VT-0700-01	Type I	Silicone	1.00	2.3	2.3	0.8	3.2

# INNOVIA MEDICAL

---

We also  
manufacture  
a range of  
single-use  
ENT devices  
that compliment  
our Ear Ventilation  
Tube range



For samples contact us in one of the following ways:

**Call:** +44 (0) 1792 79 79 10

**Email:** [dtrinfo@innoviamedical.com](mailto:dtrinfo@innoviamedical.com)

**[www.innoviamedical.com](http://www.innoviamedical.com)**



# RESPONSIBLE MANUFACTURERS OF MEDICAL DEVICES

---

As part of Innovia Medical's effort to be a more sustainable and environmentally friendly company, we have begun our Manufacturing journey to becoming net zero by 2040. We believe in protecting the planet by reducing our carbon footprint.



[innoviamedical.com/net-zero](https://innoviamedical.com/net-zero)

# Innovia Medical

## Ear Ventilation Tubes

---

**Manufactured by**

**Summit Medical LLC (an Innovia Medical Company)**

815 Vikings Parkway, Suite 100. St. Paul, MN 55121

1-888-229-2875

[www.innoviamedical.com](http://www.innoviamedical.com)

**Distributed by**

**DTR Medical Ltd. (an Innovia Medical Company)**

17 Clarion Court, Clarion Court Enterprise Park, Swansea, SA6 8RF, UK.

Call: +44 (0) 1792 79 79 10

Email: [dtrinfo@innoviamedical.com](mailto:dtrinfo@innoviamedical.com)